

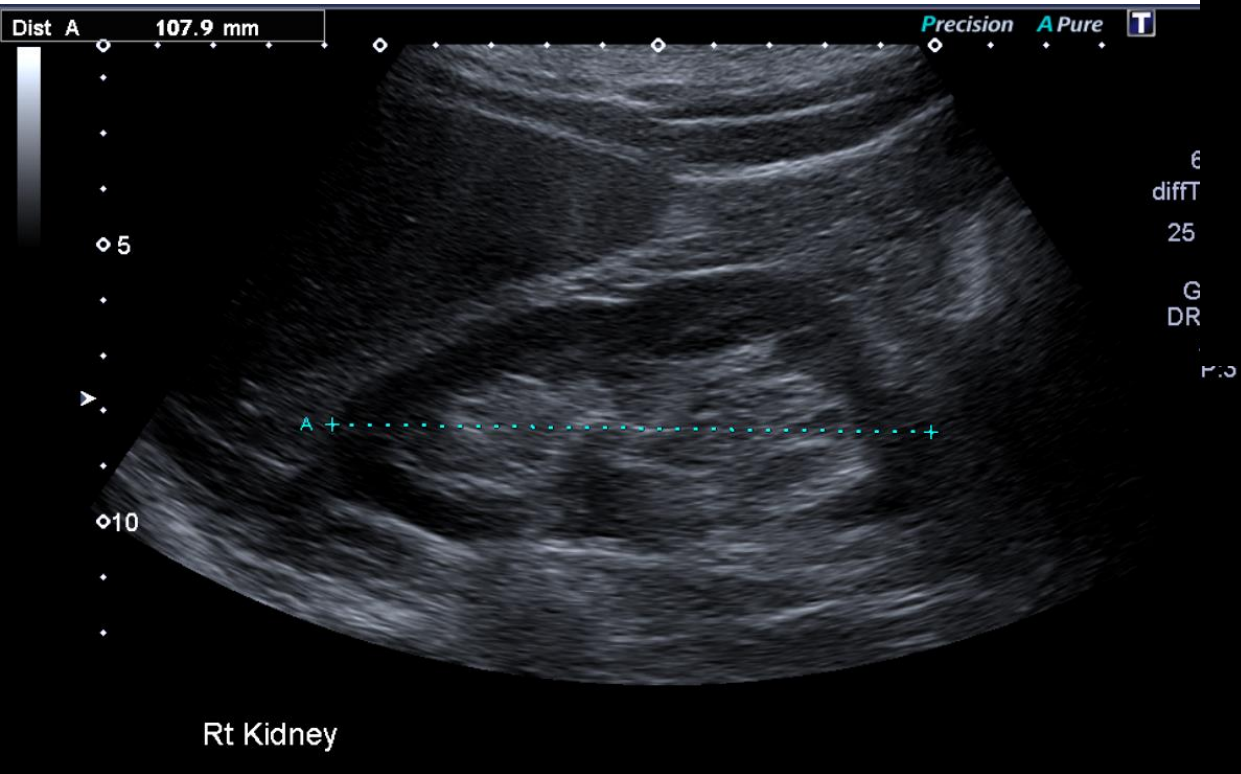
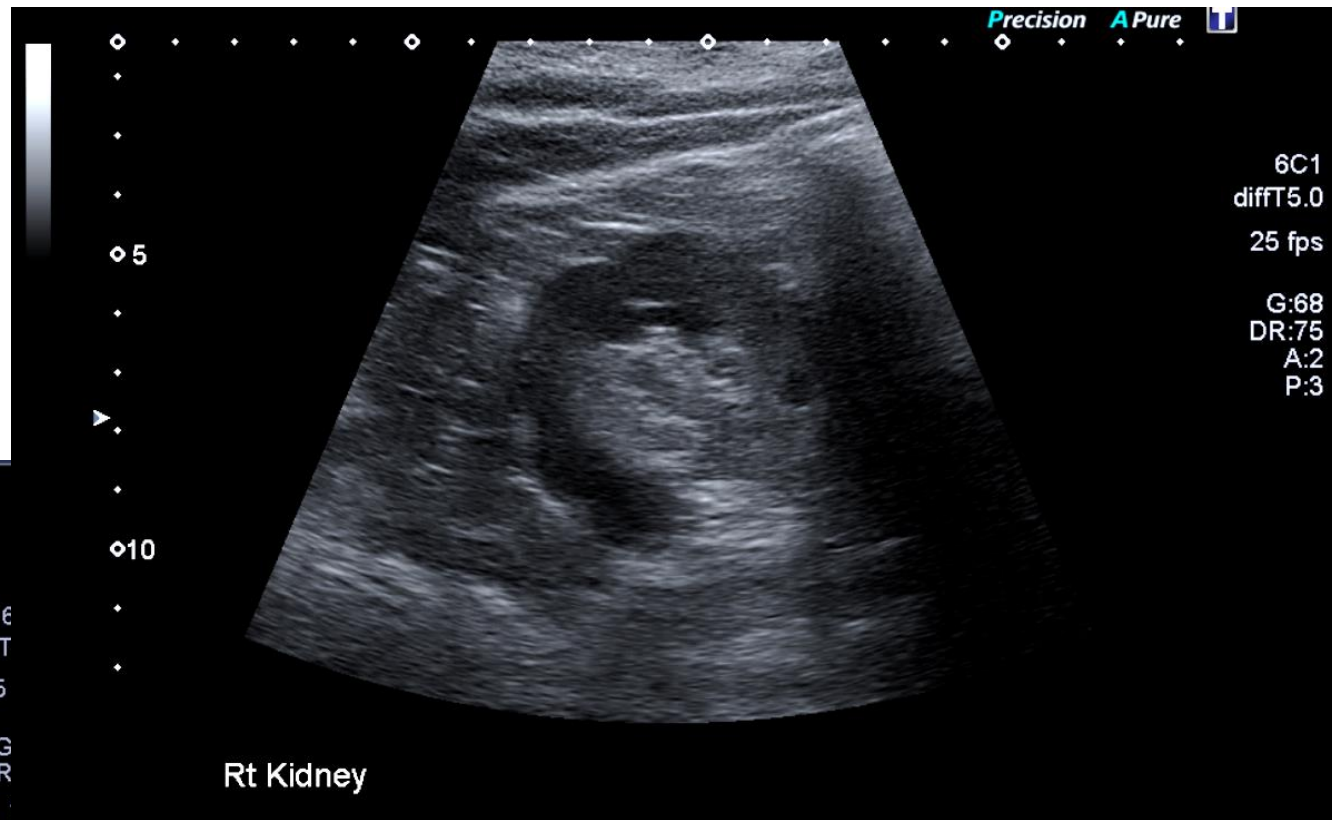
General Medical Case 10

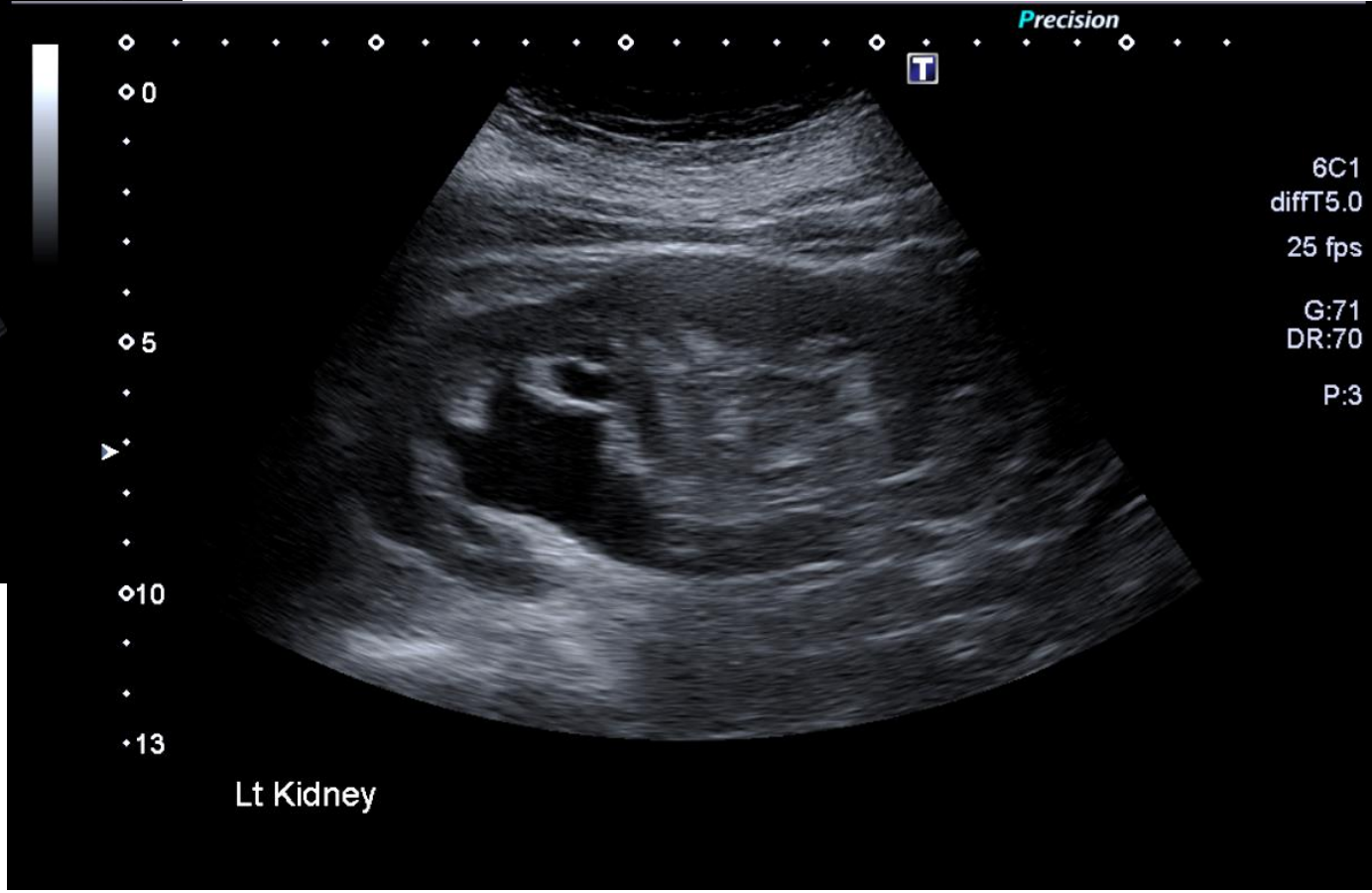
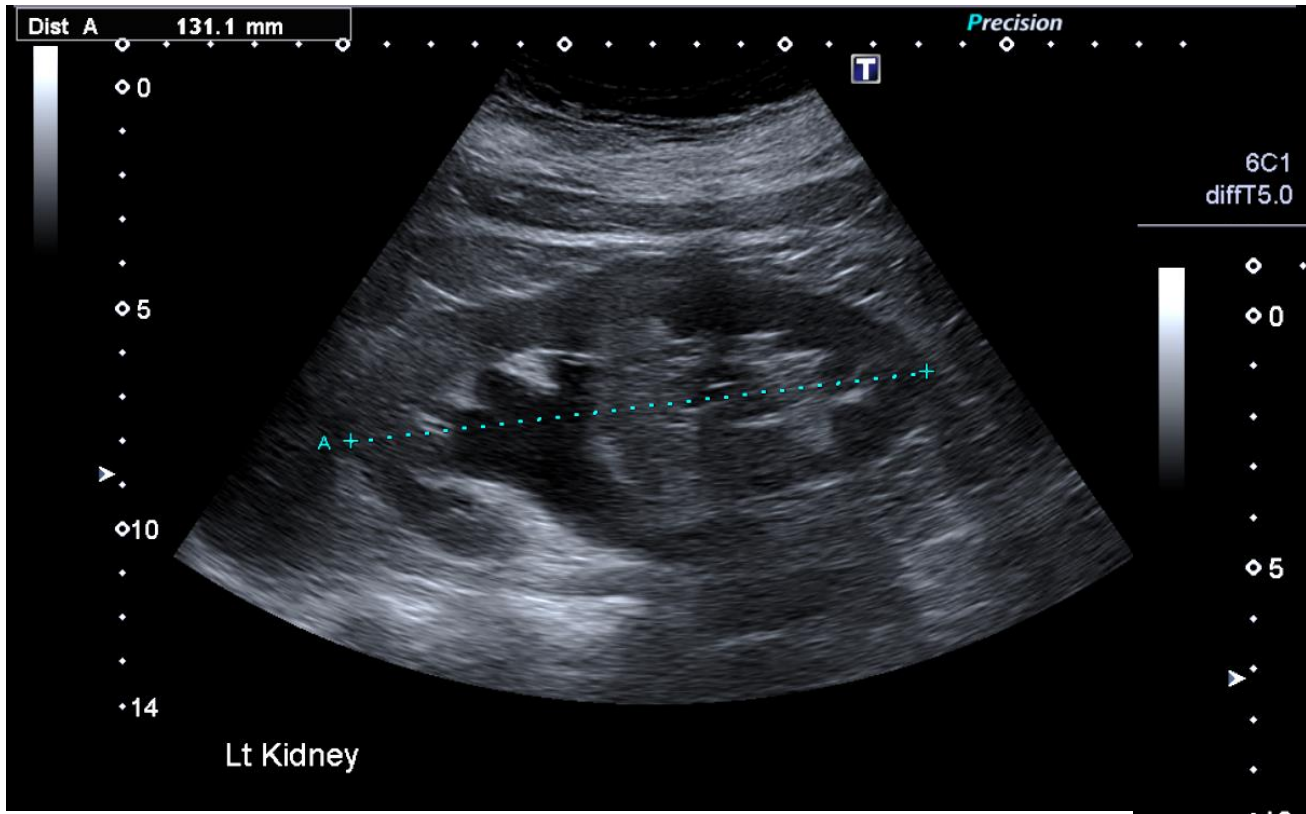
April 2024

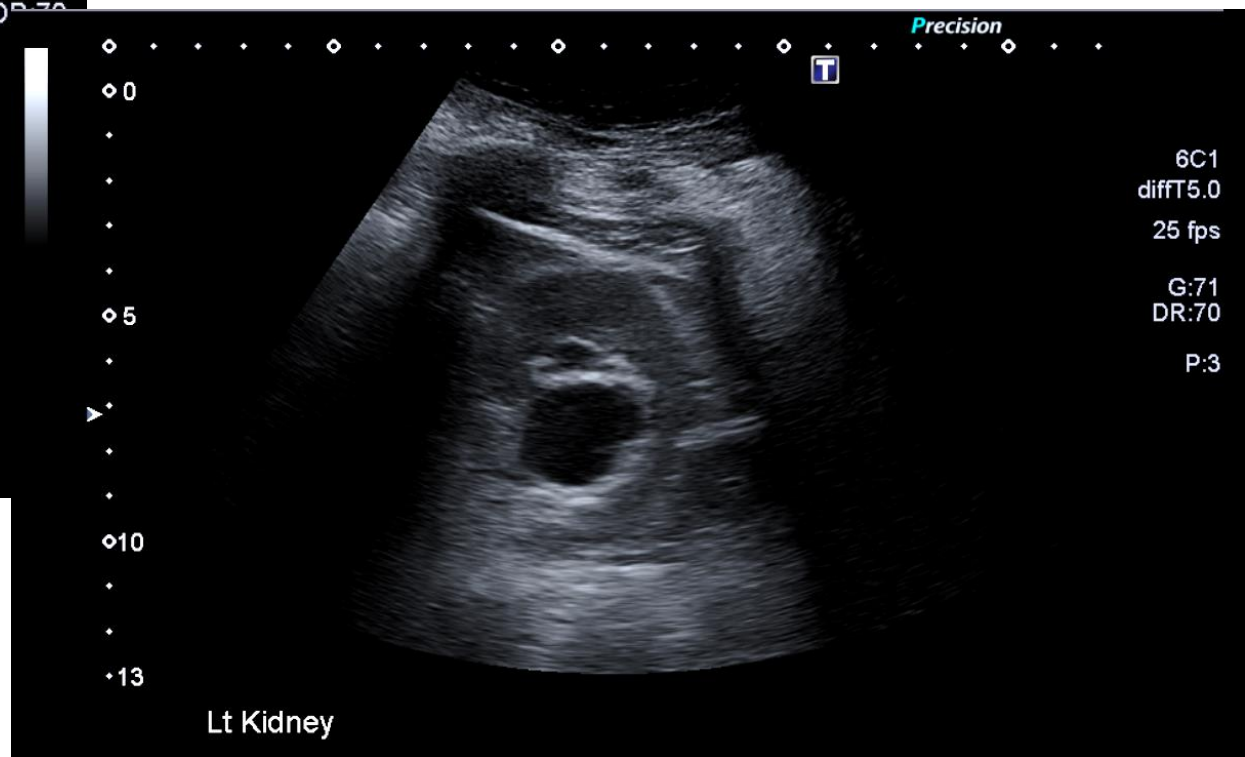
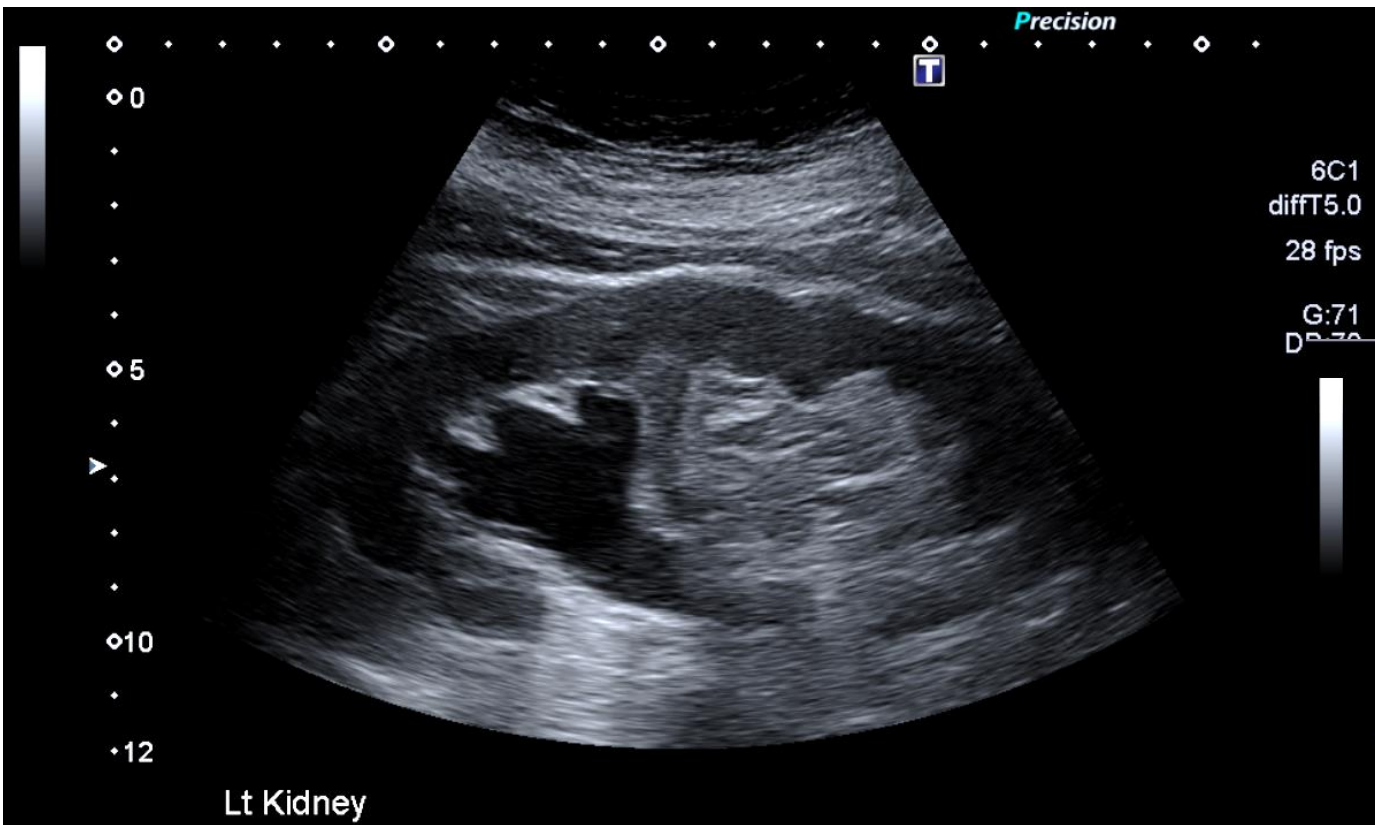
Clinical details:

55 y/o female

H/O recurrent UTIs







Do not progress to next slide until you have attempted to write a report

US Report:

There is a renal length discrepancy. Right kidney measures 10.8cm and looks normal. Left kidney measures 13.1cm and appears duplex with a dilated upper moiety and proximal ureter, the cause of which has not been identified.

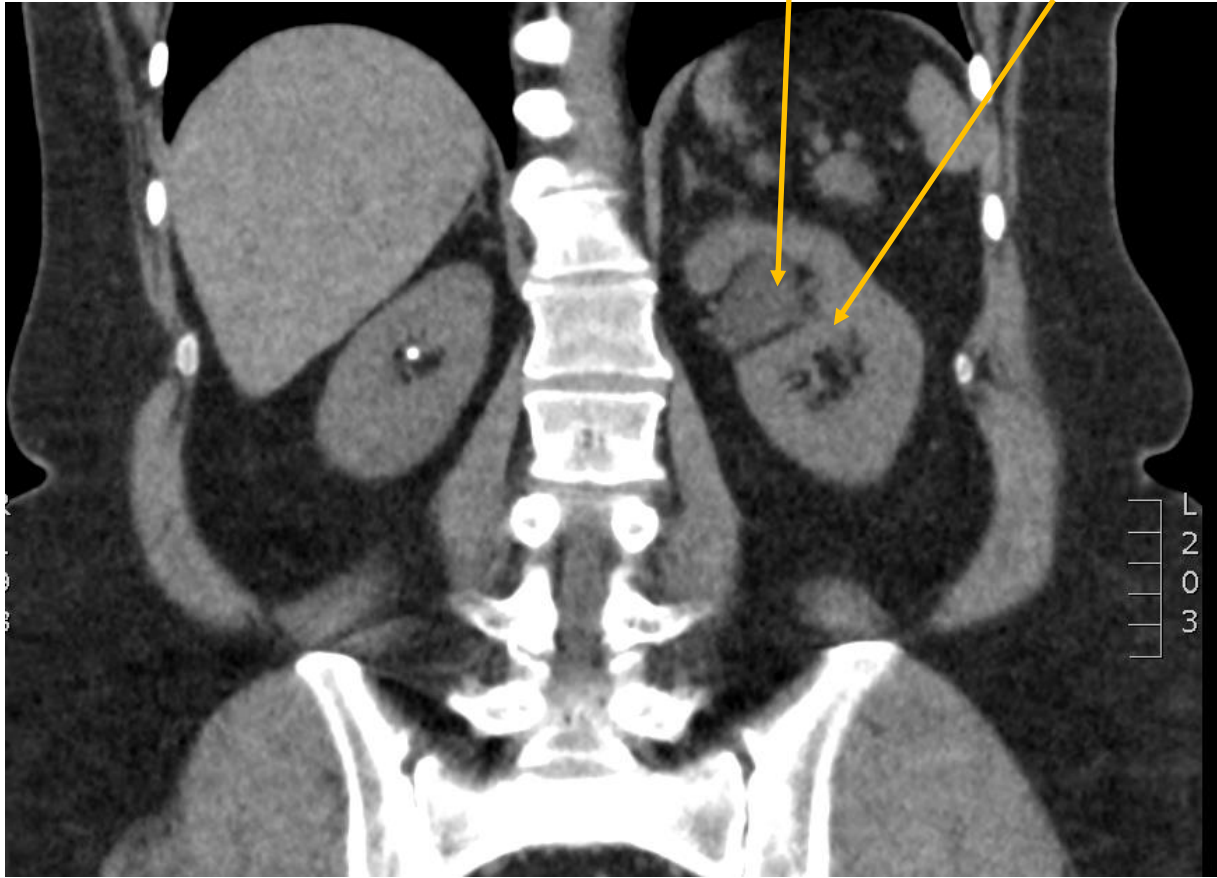
Conclusion:

The left kidney appears duplex with a dilated upper moiety. Further imaging required to establish cause of obstruction.

CT to find cause of obstruction

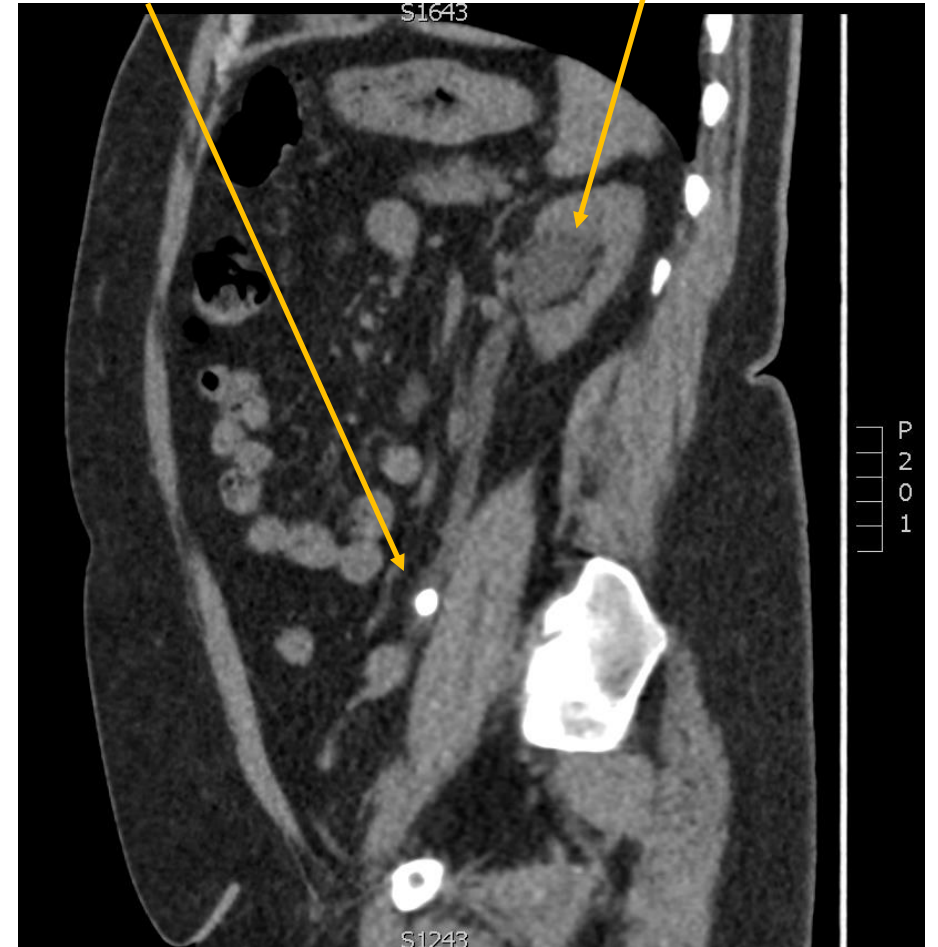
Dilated upper moiety

Separation



Stone in distal ureter

Dilated upper moiety



Duplex Kidney Fact File

Epidemiology:

Common congenital abnormality – 1 in 125 people

More common in females

Can be unilateral or bilateral

Obstruction of the upper moiety is often associated with a ureterocele

Symptoms:

Most diagnosed incidentally. Recurrent UTIs. In cases of severe hydronephrosis patients may have flank pain.