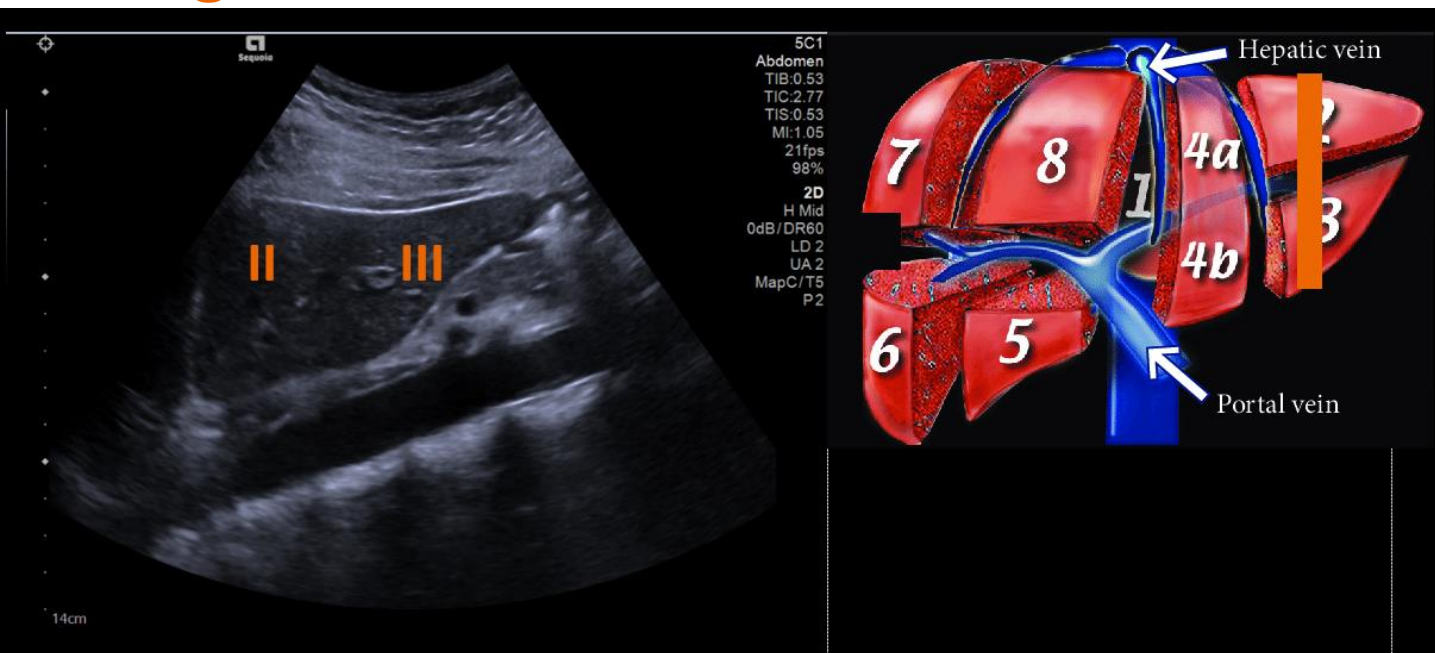




University of  
**Salford**  
MANCHESTER

## Segmental Liver Anatomy – everything you need to know to improve your diagnostic confidence.



An image based walk through ultrasound imaging of the liver-  
Presented by Gerry Johnson, Consultant Sonographer, Tameside Hospital

Followed by three dynamic Contrast Enhanced Ultrasound Case Studies differentiating focal liver masses – Presented by Judy Cuthbert, Ultrasound Product Marketing Manager, Siemens Healthineers.

Venue: Room MSG21 (ground floor), Mary Seacole Building, University of Salford, Manchester M6 6PU

Date: Thursday 19<sup>th</sup> September 2019

Time: 6.30-8.30pm

Cost for light refreshments: £5

**Please register via the BMUS Events webpage at**

<https://www.bmus.org/mediacentre/events/nwmuc-segmental-liver-anatomy/>