

# Question 1

Your colleague wishes to implement a Quality Assurance programme for your departments ultrasound scanners.

How many levels of inspection does BMUS recommend?

Which are those routinely recommended for sonographers?

Which page the Guidelines for Professional Practice would you advise them to look for the link for relevant information?

HINT - You need 3 answers to achieve full marks for this question



## Guidelines for Professional Ultrasound Practice

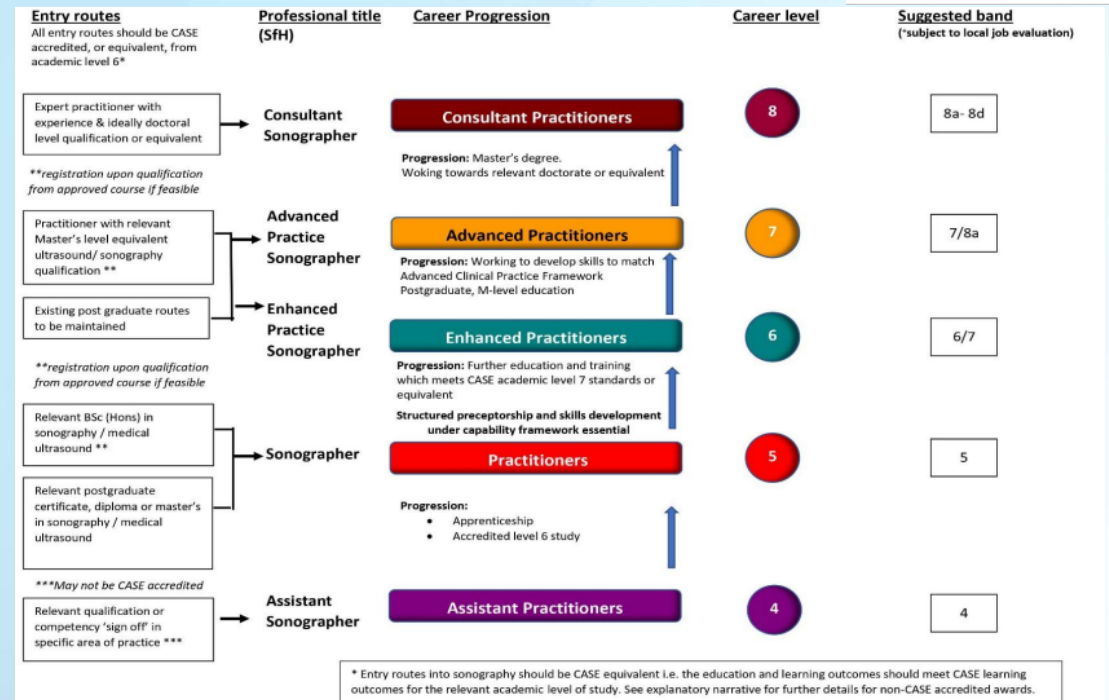
Society of Radiographers and British Medical Ultrasound Society

Ninth edition  
December 2025  
ISBN: 978-1-911738-25-1

# Question 2

Name the authors of the framework document the BMUS Preceptorship Endorsement scheme was developed from?

HINT – It is on the same webpage as the document above





SUBMIT

We promote ultrasound for healthcare professionals, and we want to help you

Join here

## Question 3

Considering the Thermal Index (TI) in relation to ultrasound examinations – at what level of TI does BMUS recommend there should be time constraints applied to the ultrasound examination if this level is exceeded?

Hint – Look on the website at the ‘Position statements’



SUBMIT

We promote ultrasound for healthcare professionals, and we want to help you

[Join here](#)

## Question 4

When diagnosing tuberculosis in a dog, what is the significance of the B-lines?



# Question 5

In this February 2023 article, the authors identify three elements required for safe and sustainable role extension in advanced practice ultrasound.

What are they?

February 2023

Five of the studies included in this review reported both positive and negative participant experiences with self-management

Role extension in advanced ultrasound practice:

A framework approach and case study.

*Ultrasound*. doi:[10.1177/1742271X221102577](https://doi.org/10.1177/1742271X221102577). Reeve R, Higginson A, Ball C, *et al*.

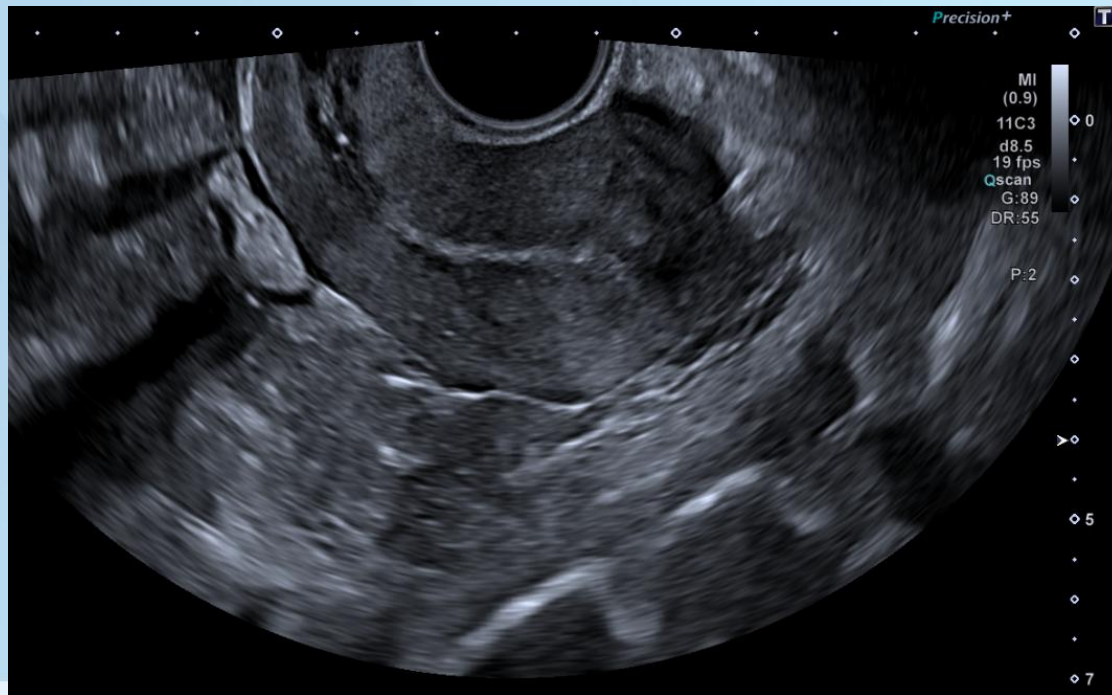


# Question 6

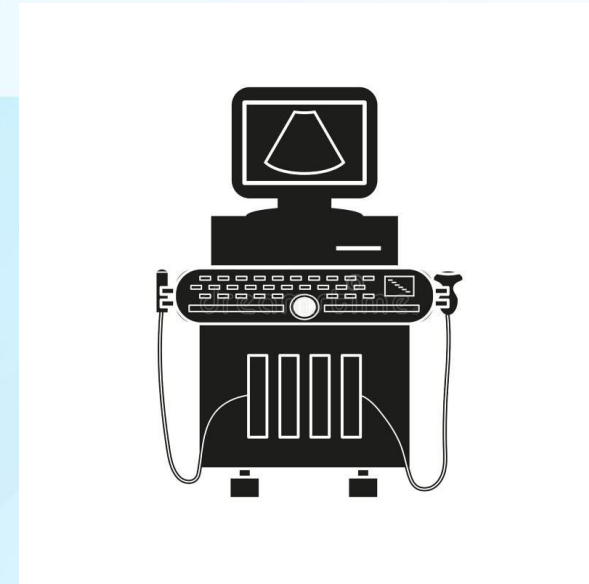
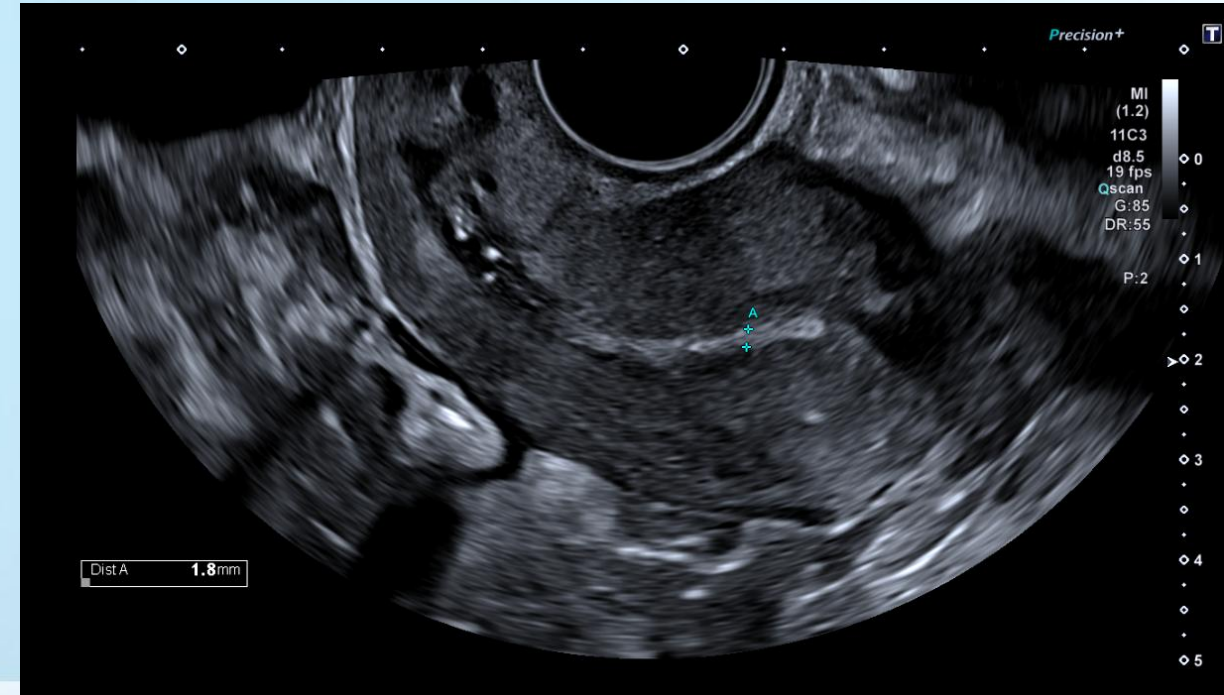
## Physics and Image Quality: Spot the difference!

Identify five differences between Image 1 and 2 below and briefly describe the importance of setting this correctly

### Image 1

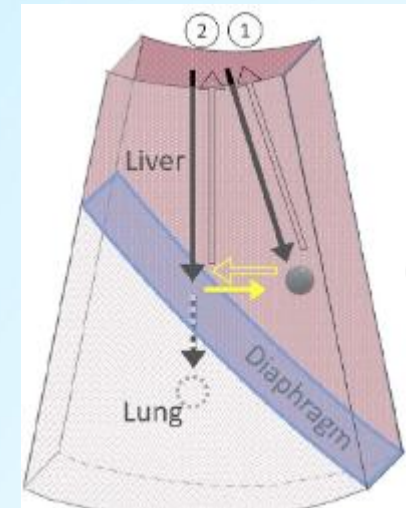
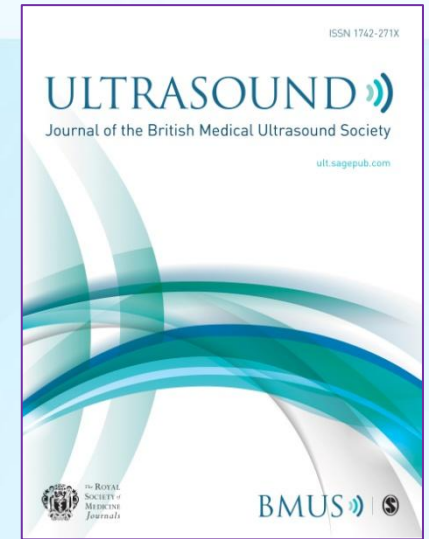
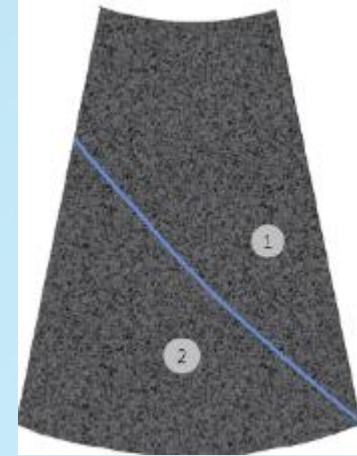


### Image 2



# Question 7

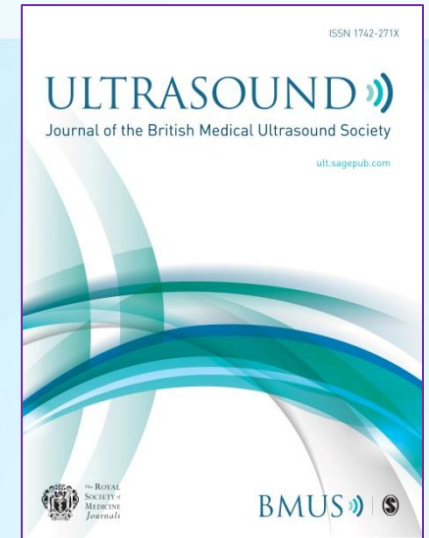
In mirror artefact in the liver, list the 7 physical assumptions for the ultrasound beam



# Question 8

Regarding Quality Assurance in ultrasound – in this survey, what % of respondents only conducted annual quality assurance on their equipment?

Hint – look in 2022 editions of the ultrasound journal



# Question 9

Ultrasound 2025, volume 3

In this article on communication skills – list the 3 points discussed in ‘humanising care’ in the delivery of compassion focussed care

**‘More like a partnership’: A qualitative evaluation of Communication Coaching for Sonographers (CCS) in obstetric ultrasound**





SUBMIT

We promote ultrasound for healthcare professionals, and we want to help you

[Join here](#)

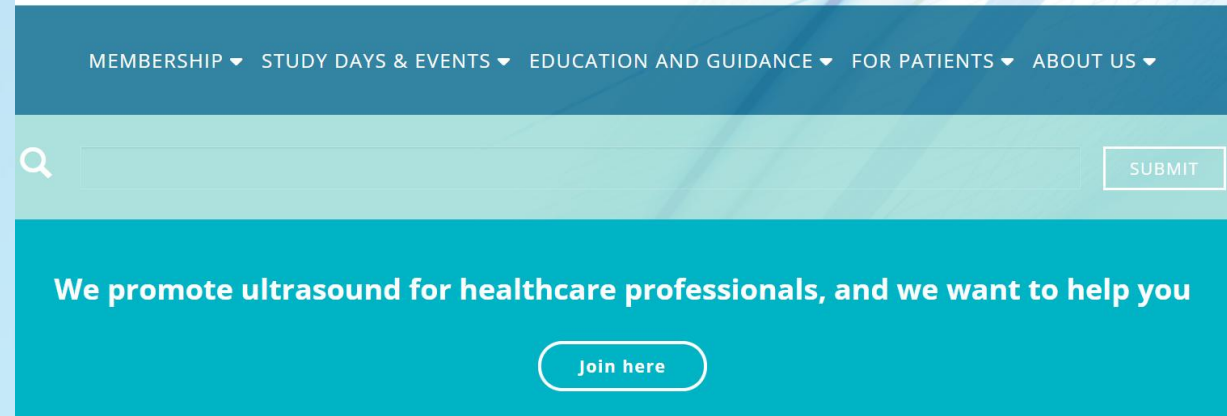
# Question 10

In the webinar in the BMUS Webinar library (located on the BMUS website) titled 'Disentangling the Cardiac Outflow Tracts', which hospital does the trainer work at?

Hint – find the first webinar in this series of 2 webinars on this topic to locate the answer to this question

# Question 11

On the BMUS website in the 'Top Tips' area, what is title of tip number 4 in the 'Tips for student sonographers' section?



# Question 12

Which ruling highlights the need to ensure that patients are fully involved in decision-making processes, including providing evidence-based information that a 'reasonable person' in their position might 'attach significance to the risk'.

Hint – the answer can be found in the Guidelines for Professional Ultrasound Practice document

