

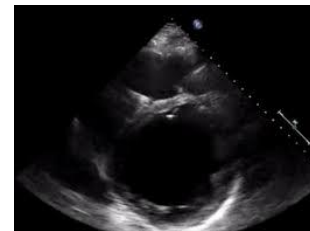
# Point of Care Echo

## One image, 3 Questions ?

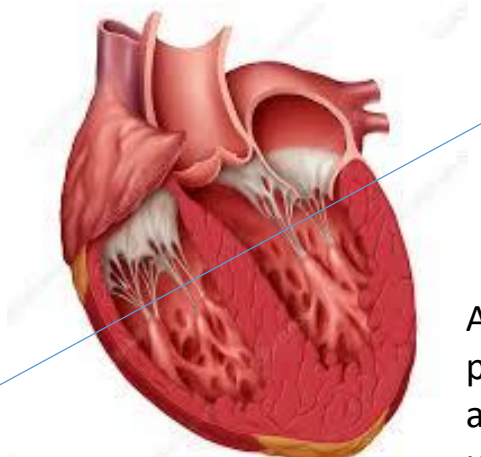
### Dr D Priya Dr R Beese MRCP FRCR

With one image taken of the heart in the short axis parasternal view 3 questions can be answered  
 Is there a pericardial effusion ?  
 What is the left ventricular function,  
 Is there right heart ventricular dilatation suggestive of a pulmonary embolus ? . These questions are of utmost importance in patients with chest pain and breathlessness a common medical presentation.  
 This imaging and diagnosis is of most use in A/E resuscitation and Intensive care units.

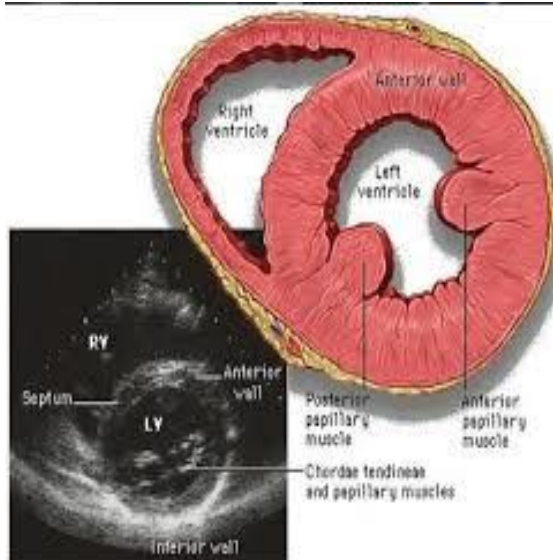
#### Emergency settings of Pocus Echo



A 50 year old male presents to A/E with a past history of MI and breathlessness, the Left heart is dilated consistent with left heart failure



A 30 week pregnant patient presents to A/E with chest pain and breathlessness, the ultrasound demonstrates a dilated right heart consistent with a possible pulmonary embolus



A 20 year old patient presents with breathlessness after a viral infection, the ultrasound demonstrates a pericardial effusion.